



# BookDrive Mark 2

Il nuovo standard per la digitalizzazione dei libri.



## Fast Facts

- The latest and most powerful model from the Atiz family of book scanners
- Built with close collaboration and feedback from customers and technical specialists
- Superior ergonomics, operator comfort and safety
- Major upgrade on image quality and software functionality



## THE BOOKDRIVE MARK 2

Meet BookDrive Mark 2, an evolution of the BookDrive Pro, the world's best and largest-selling book scanner that has been used by thousands of prestigious institutions and libraries worldwide.

BookDrive Mark 2 is our latest, most powerful, best designed and engineered model yet. From years of research and development, and close collaboration with technical specialists, we are able to create a significantly improved, highly productive machine that is also pleasant to use. It is superior to the previous model on both technical and user standpoints.

Meticulously designed and thoroughly tested, BookDrive Mark 2 produce images that meet the highest, most stringent digitization and preservation standards.

## WHAT IS BOOKDRIVE?

BookDrive is a dual-camera adjustable "V" cradle imaging system for capturing images of books and other print material, including bound volumes, without risk of damage to the items being scanned. It is a scanning solution created by Atiz that has become the industry standard and widely embraced even by competitors.

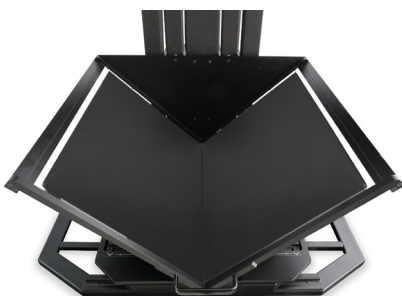
## SUPERIOR ERGONOMICS, COMFORT AND SAFETY

Ergonomics, operator comfort and safety received a major upgrade. BookDrive Mark 2 is easier on your eyes and ears.

- No direct light facing toward users
- Cool and silent operation
- Lighting dims when turned off
- Better overall ergonomics

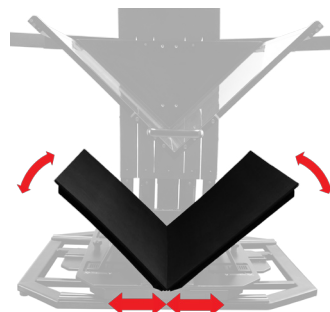


## THE "V" SYSTEM GETS A MAJOR UPGRADE



### Better, scratch-resistant V platen

The V platen is made using a premium scratch-resistant material that is more transparent and durable than glass allowing for better scanned images. It is manufactured using a different production technique so that it allows you to scan deeper into the gutter.



### Flexible cradle for thick-spine books

The new V cradle is better and more flexible. The cradle is adjustable, the angle altered and opened apart. This makes for optimal page contact for all kinds of book bindings and spine thicknesses. The self-centering cradle slide sideways during scanning keeping the books centered.



### V platen so light

New V platen mechanics allow for the operator better control of the platen to mitigate risk of operator injury or damage to items being digitized. It is fingertip light to lift or lower. The platen hovers in the air and stays exactly where you position it.



## NEAR PERFECT LIGHT DESIGN

### Better image quality backed up by stats

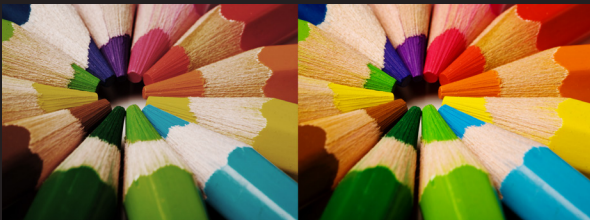
- Even light distribution with no bright or dark spot visible anywhere in the frame.

### More realistic color

- With CRI (color rendering index) over 85% (vs 75% of BookDrive Pro), this means the color is more realistic and accurate, truer to the originals than ever before.

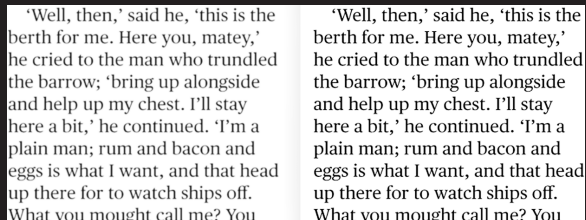
### Supreme sharpness

- Brighter light equivalent to 2 stop speed shutter (compared with BookDrive Pro)
- Extra sharpness achieved. Proven by MTF (Modulation Transfer Function, a scientific method for measuring sharpness) value = 0.



Other system

BookDrive Mark 2 (CRI = 85%)

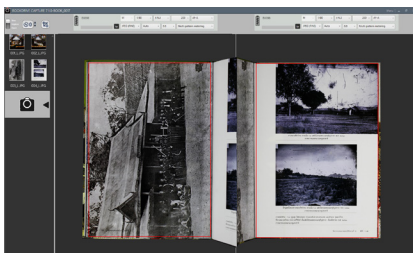


Other system

BookDrive Mark 2 (MTF = 0)

## THE BEST SUITE OF SOFTWARE

Software determines the true productivity of a system and software from Atiz is the best.



### BookDrive Capture

The application that controls the cameras and makes on-the-fly editing to the images during scan.

- Nikon and Canon cameras
- Operator can view captured images on a monitor in the correct orientation without additional adjustment
- Fast shooting up to 800 pages/hour
- In-software camera settings allow you to configure settings such as shutter speed, aperture and other properties of the camera
- Metadata support
- Various convenient way to capture: by timed lapse or by using Auto Capture Switch
- RAW support and a workflow that allow you to convert from RAW files to lossless formats such as TIFF
- Easily insert missing pages or replace or delete unwanted ones. All the affected files will be named correctly and automatically



### BookDrive Editor Pro

The application for advanced post-scan image processing to create output of the highest quality ready for distribution.

- Robust enhancement tools and intuitive use interface deliver professional results with minimal fuss
- Fast Batch processing for unattended, hassle-free operation
- Multi-book, multi-chapter operation
- Book Profiling for quickly applying the same settings to similar kind of books
- Adaptive Local Thresholding for highest quality B&W conversion
- Verifiable image resolution
- Support the sRGB color space
- Capable of providing uncompressed 24-bit color TIFF files that conform to ISO 12234-2.2
- And a lot more (including rotation, deskew, crop, auto level, brightness and contrast adjustment, etc.)
- Available output formats include PDF (single or multi-page file), TIFF (LZW and CCITT Group 4, single or multi-page file) and JPEG

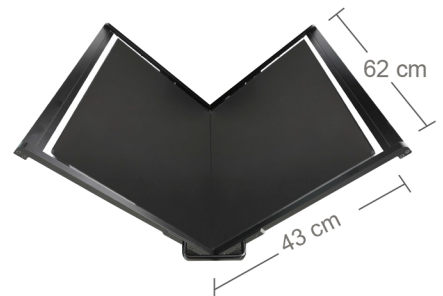
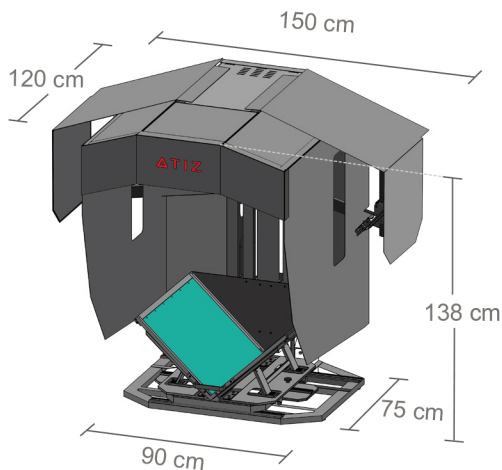


# COMPATIBLE CAMERAS AND LENSES

## Canon

## Nikon

	1.6 Crop factor Canon EOS 1000D, 1100D, 700D, 650D, 550D, 500D, 450D, 100D, 60D, 50D, 40D, 7D		1.5 Crop factor Nikon D3200		
Scanning A4 to A3	Prime Lens  EF 50 mm (e.g. EF 50 mm f/1.8 II)	Zoom Lens  EF-S18-55 mm f/3.5-5.6 IS	Prime Lens  50 mm (e.g. AF-S NIKKOR 50mm f/1.8G)	Zoom Lens  AF-S DX NIKKOR 18-55mm f/3.5-5.6	
	Prime Lens  EF 35 mm (e.g. EF 35 mm f/2)		<ul style="list-style-type: none"> <li>Zoomed at 50 mm for scanning A4 to A3</li> <li>Zoomed at 35 mm for scanning A3 to A2</li> </ul>		Prime Lens  35 mm (e.g. AF-S NIKKOR 35mm f/1.8G)
		<b>Full frame</b> 5D Mark II, 5D Mark III, 1Ds Mark III, 1D X, 1D C, 6D		<b>Full frame</b> Nikon D800, D810	
Scanning A4 to A3	Prime Lens  EF 85 mm (e.g. EF 85 mm f/1.8 USM)	Zoom Lens  EF 24- 105 mm f/4L IS USM	Prime Lens  85 mm (e.g. AF-S NIKKOR 85mm f/1.8D)	Zoom Lens  AF-S VR ZOOM- NIKKOR 24-120mm f/3.5-5.6	
	Prime Lens  EF 50 mm (e.g. EF 50 mm f/1.8 II)		<ul style="list-style-type: none"> <li>Zoomed at 85 mm for scanning A4 to A3</li> <li>Zoomed at 50 mm for scanning A3 to A2</li> </ul>		Prime Lens  50 mm (e.g. AF-S NIKKOR 50mm f/1.8G)



Maximum scanning area: 43 x 62 cm (16.9 x 24.4 inches )  
Maximum book thickness: 15 cm (5.9 inches)

## Product Dimension

Base footprint: 75 x 90 cm  
(29.5 x 35.4 inches)

Overall dimension: 120 x 150 x 138 cm  
(47.3 x 59.0 x 54.3 inches)

Weight: 80 kg (176 lbs)

## Box Packaging

Box 1: 45 x 145 x 48 cm (17.7 x 57.1 x 18.9 inches)  
Weight: 52 kg (114.4 lbs)

Box 2: 60 x 60 x 79 cm ( 23.6 x 23.2 x 31.1 inches)  
Weight: 17 kg (37.4 lbs)

Box 3: 32 x 102 x 82 cm ( 12.6 x 40.2 x 32.3 inches)  
Weight: 32 kg (70.4 lbs)